

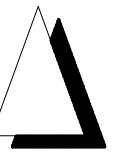
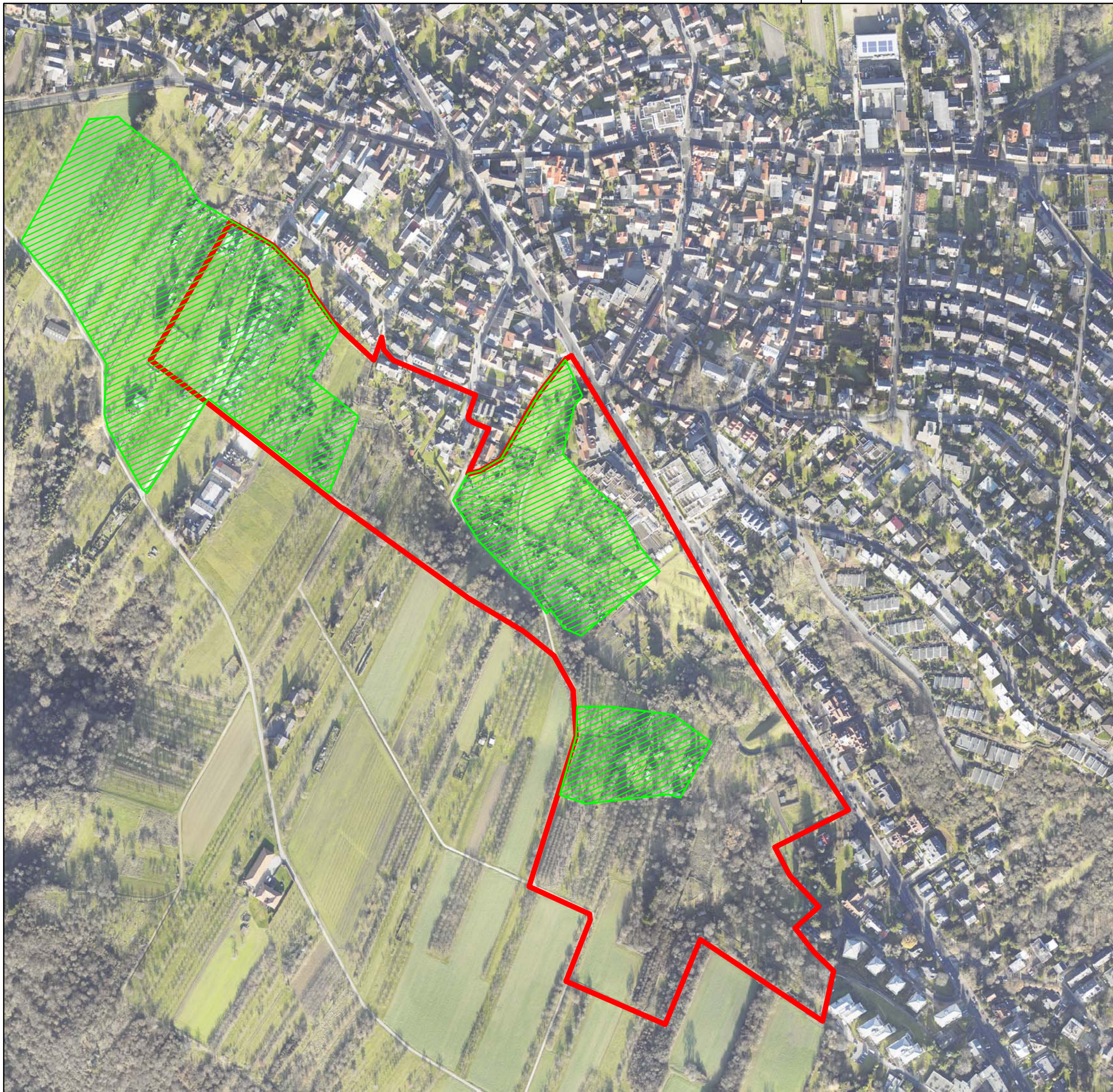


Bebauungsplan Nr. 55  
"Niederdorfsbachtal"  
Stadt Bad Soden am Taunus  
- Gartennutzung nach RegFNP -

Zeichenerklärung

-  Untersuchungsbereich
-  Abgrenzung Gartennutzung nach Reg FNP



M 1 : 4.000









08.05.2013

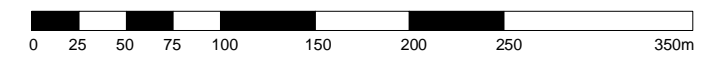
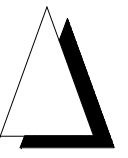
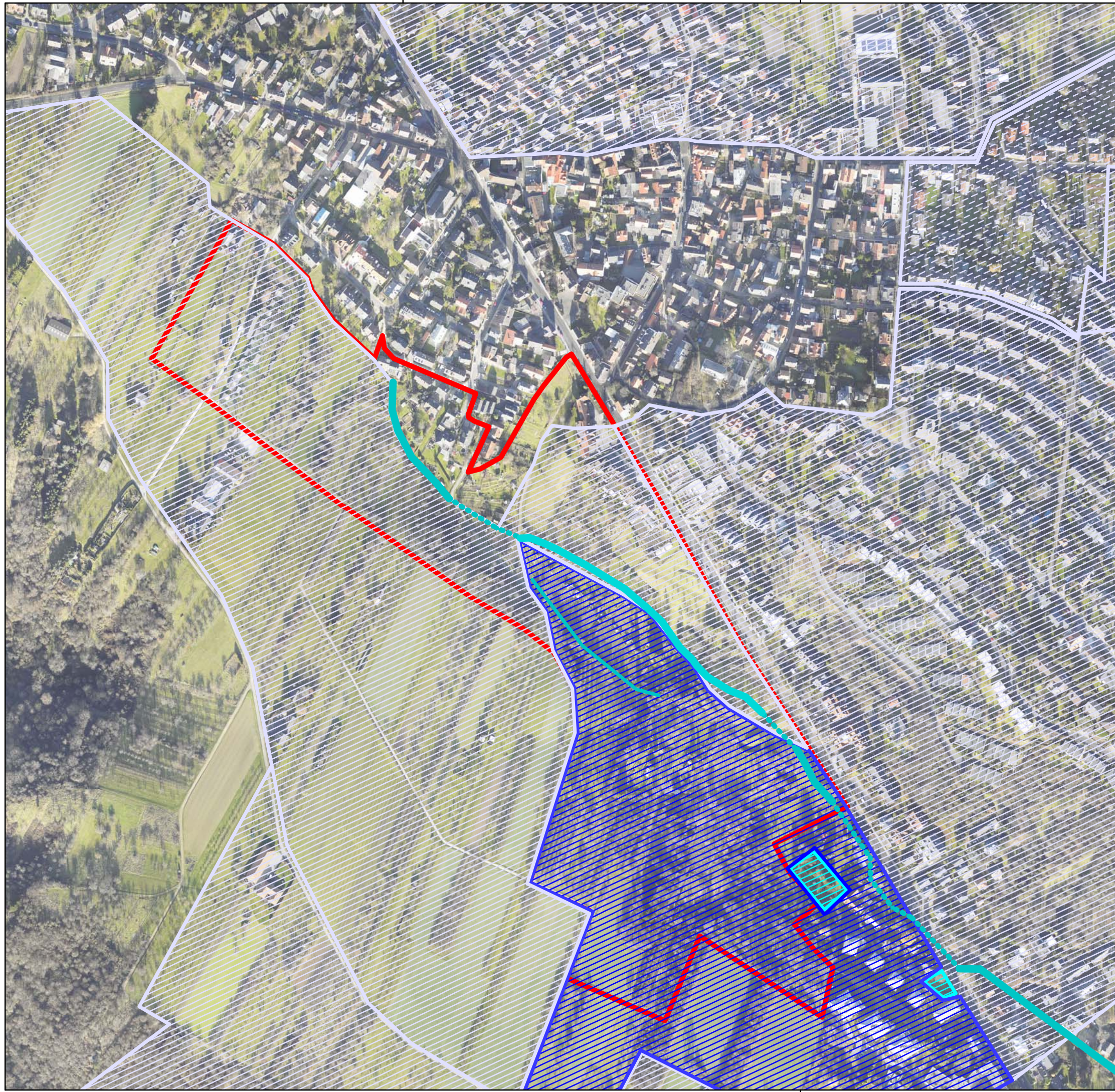
 **Götte** GmbH  
**Landschaftsarchitekten**

■ Schaper ■ Kappes ■ Habermann  
Hunsrückstr. 56 65929 Frankfurt a.M.  
Fon: 069-3756196-0 Fax: 3756196-29  
info@goette-landschaftsarchitekten.de

Bebauungsplan Nr. 55  
"Niederdorfsbachtal"  
Stadt Bad Soden am Taunus  
- Trinkwasserschutzgebiete -

Zeichenerklärung

-  Untersuchungsbereich
-  Trinkwasserschutzgebiet  
Zone I (geplant)
-  Trinkwasserschutzgebiet  
Zone II (geplant)
-  Trinkwasserschutzgebiet  
Zone III (geplant) bzw. IIIa
-  Trinkwasserschutzgebiet  
Zone IIIb (geplant)
-  Niederdorfsbach (offen)
-  Niederdorfsbach (verrohrt)
-  offener Graben





M 1 : 4.000

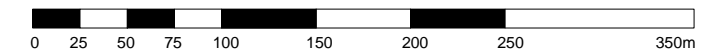
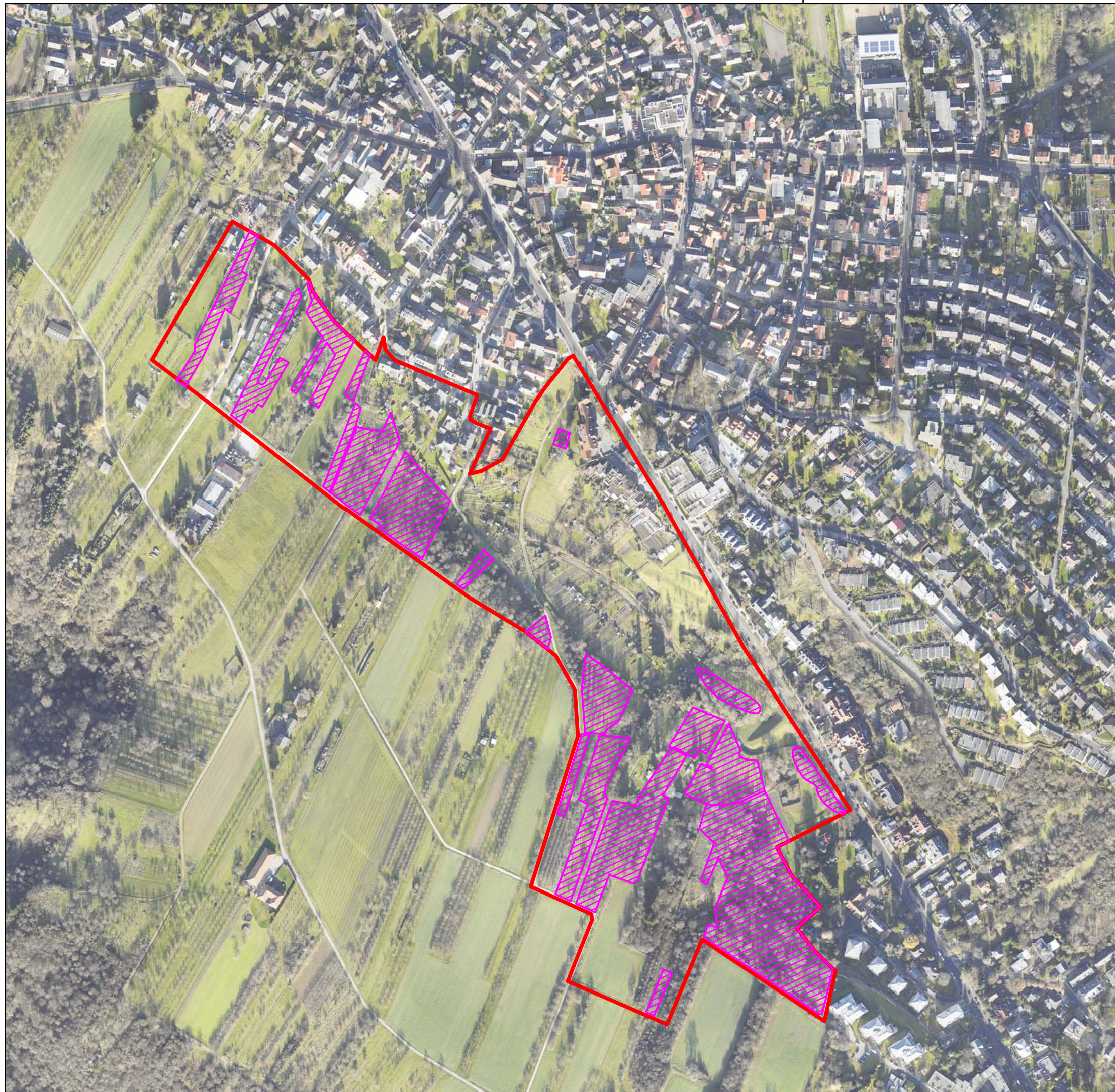
08.05.2013

 **Götte** GmbH  
**Landschaftsarchitekten**  
■ Schaper ■ Kappes ■ Habermann  
Hunsrückstr. 56 65929 Frankfurt a.M.  
Fon: 069-3756196-0 Fax: 3756196-29  
info@goette-landschaftsarchitekten.de

Bebauungsplan Nr. 55  
"Niederdorfsbachtal"  
Stadt Bad Soden am Taunus  
- gesetzlich geschützte Biotope -

Zeichenerklärung

-  Untersuchungsbereich
-  gesetzlich geschützte Biotope  
nach BNatSchG und  
HAGBNatSchG



M 1 : 4.000




08.05.2013

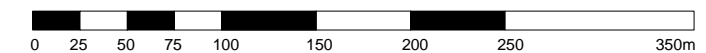
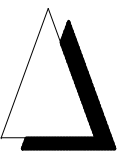
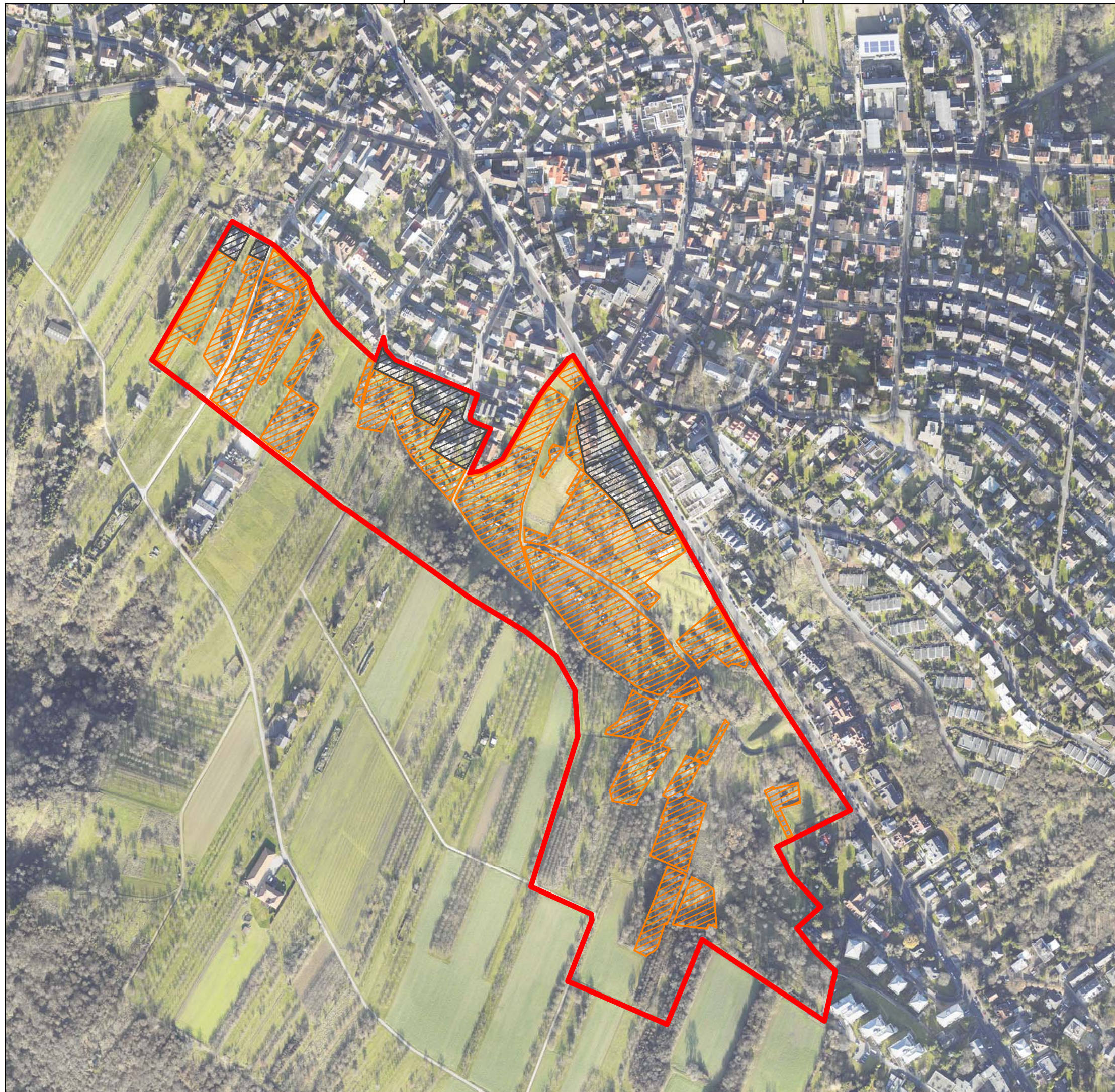
 **Götte** GmbH  
**Landschaftsarchitekten**

■ Schaper ■ Kappes ■ Habermann  
Hunsrückstr. 56 65929 Frankfurt a.M.  
Fon: 069-3756196-0 Fax: 3756196-29  
info@goette-landschaftsarchitekten.de

Bebauungsplan Nr. 55  
"Niederdorfsbachtal"  
Stadt Bad Soden am Taunus  
- Grünflächennutzungen -

Zeichenerklärung

-  Untersuchungsbereich
-  bestehende gärtnerische Nutzung sowie Sondernutzung (Kleintierzuchtanlage, etc.)
-  Bebauung



M 1 : 4.000

08.05.2013

 **Götte** GmbH  
**Landschaftsarchitekten**

■ Schaper ■ Kappes ■ Habermann  
Hunsrückstr. 56 65929 Frankfurt a.M.  
Fon: 069-3756196-0 Fax: 3756196-29  
info@goette-landschaftsarchitekten.de